

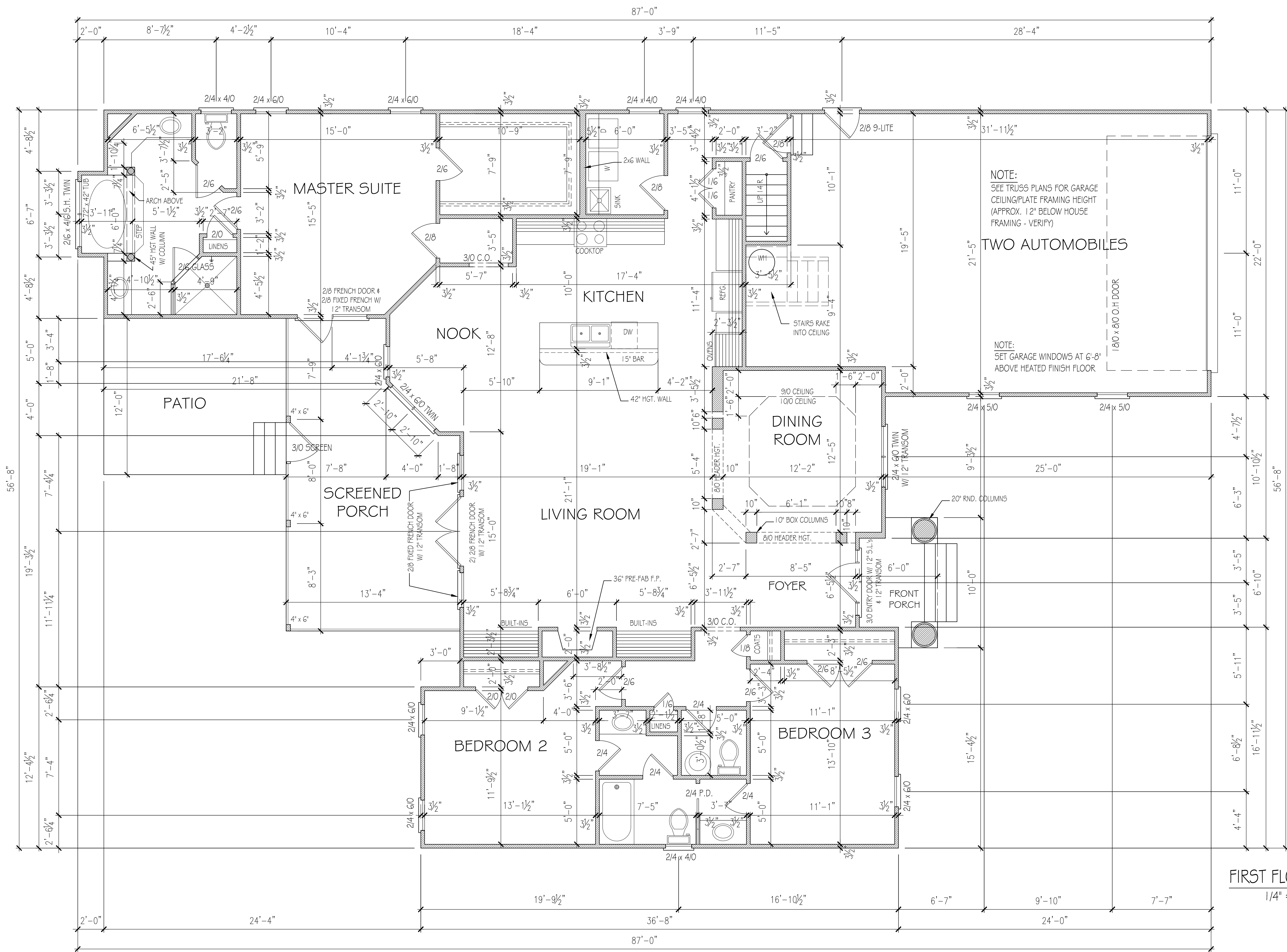
12-12-11

BradleyThorne Design
bradleythorne.com
919-815-6108

BARKER and CANADY
The CASA BELLA

05-23-11
BPT

3



NOTE:
SEE TRUSS PLANS FOR GARAGE
CEILING/PLATE FRAMING HEIGHT
(APPROX. 12" BELOW HOUSE
FRAMING - VERIFY)

NOTE:
SET GARAGE WINDOWS AT 6'-8"
ABOVE HEATED FINISH FLOOR

- FRAMING NOTES:
- 1). Ask supervisor about HVAC/Storage areas.
 - 2). Double up bottom plate @ ext. walls (cut 1 1/2" off ext. studs).
 - 3). Use materials list provided by supervisor.
 - 4). Do all vinyl preparation for vinyl contractor (fir porches/corners, etc.).
 - 5). Uplift on house and porch walls (ask supervisor about rear porch).
 - 6). 9/0 clg. hgt. (9'-1 1/2" plate hgt.) UNO.
 - 7). Set windows at 7'-4" above finish floor (AFF.) UNO.
 - 8). Dimensions are from face of framing.
 - 9). NOTIFY CONTRACTOR OF ANY FRAMING DISCREPANCIES.
 - 10). Roof trusses to be designed and engineered by supplier.
 - 11). Do not scale drawings for framing purposes.
 - 12). Verify options.

2210 HEATED SQUARE FEET
381 SQUARE FEET BONUS ROOM
726 SQUARE FEET GARAGE
53 SQUARE FEET FRONT PORCH
278 SQUARE FEET SCREENED PORCH
168 SQUARE FEET PATIO

FIRST FLOOR PLAN
1/4" = 1'-0"

Bradley Thorne assumes no liability for any deviation or construction methods of these plans. Contractor is responsible for verification of all information and structural specifications prior to commencement of construction.